

Sample Ballot Only

2024

S  
A  
M  
P  
L  
E  
B  
A  
L  
L  
O  
T

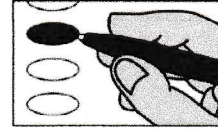
Sample Ballot  
Watauga County, North Carolina  
November 5, 2024

B0005  


[Empty box for voter information]

**BALLOT MARKING INSTRUCTIONS:**

- A. With the marking device provided or a black ball point pen, completely fill in the oval to the left of each candidate or selection of your choice as shown.
- B. Where authorized, you may write in a candidate by filling in the oval and writing the name on the Write-in line.
- C. If you tear, deface or wrongly mark this ballot, return it to request a replacement.



This ballot marked and paid for by Pam Williams of Pams Picks dot net

PARTISAN ELECTIONS		NC Governor (You may vote for ONE)	NC Commissioner of Insurance (You may vote for ONE)
<b>President and Vice President of the United States</b> (You may vote for ONE)		<input type="radio"/> Mark Robinson <i>Republican Party</i> <input type="radio"/> Mike Ross <i>Libertarian Party</i> <input type="radio"/> Vinny Smith <i>Constitution Party</i> <input checked="" type="radio"/> Josh Stein <i>Democratic Party</i> <input type="radio"/> Wayne Turner <i>Green Party</i>	<input checked="" type="radio"/> Natasha Marcus <i>Democratic Party</i> <input type="radio"/> Mike Causey <i>Republican Party</i>
<input checked="" type="radio"/> Kamala D. Harris Tim Walz <i>Democratic Party</i> <input type="radio"/> Chase Oliver Mike ter Maat <i>Libertarian Party</i> <input type="radio"/> Jill Stein Rudolph Ware <i>Green Party</i> <input type="radio"/> Randall Terry Stephen E. Broden <i>Constitution Party</i> <input type="radio"/> Donald J. Trump JD Vance <i>Republican Party</i> <input type="radio"/> Cornel West Melina Abdullah <i>Justice for All Party</i> Write-in _____	<b>NC Lieutenant Governor</b> (You may vote for ONE) <input checked="" type="radio"/> Rachel Hunt <i>Democratic Party</i> <input type="radio"/> Wayne Jones <i>Constitution Party</i> <input type="radio"/> Hal Weatherman <i>Republican Party</i> <input type="radio"/> Shannon W. Bray <i>Libertarian Party</i>	<b>NC Commissioner of Labor</b> (You may vote for ONE) <input type="radio"/> Luke Farley <i>Republican Party</i> <input checked="" type="radio"/> Braxton Winston II <i>Democratic Party</i>	
<b>US House of Representatives District 5</b> (You may vote for ONE)		<b>NC Attorney General</b> (You may vote for ONE) <input checked="" type="radio"/> Jeff Jackson <i>Democratic Party</i> <input type="radio"/> Dan Bishop <i>Republican Party</i>	<b>NC Secretary of State</b> (You may vote for ONE) <input checked="" type="radio"/> Elaine Marshall <i>Democratic Party</i> <input type="radio"/> Chad Brown <i>Republican Party</i>
<input type="radio"/> Virginia Foxx <i>Republican Party</i> <input checked="" type="radio"/> Chuck Hubbard <i>Democratic Party</i>	<b>NC Auditor</b> (You may vote for ONE) <input type="radio"/> Bob Drach <i>Libertarian Party</i> <input checked="" type="radio"/> Jessica Holmes <i>Democratic Party</i> <input type="radio"/> Dave Boliek <i>Republican Party</i>	<b>NC Superintendent of Public Instruction</b> (You may vote for ONE) <input checked="" type="radio"/> Maurice (Mo) Green <i>Democratic Party</i> <input type="radio"/> Michele Morrow <i>Republican Party</i>	
<b>NC Commissioner of Agriculture</b> (You may vote for ONE)		<input type="radio"/> Sean Haugh <i>Libertarian Party</i> <input checked="" type="radio"/> Sarah Taber <i>Democratic Party</i> <input type="radio"/> Steve Troxler <i>Republican Party</i>	<b>NC Treasurer</b> (You may vote for ONE) <input checked="" type="radio"/> Wesley Harris <i>Democratic Party</i> <input type="radio"/> Brad Briner <i>Republican Party</i>
			<b>NC Supreme Court Associate Justice Seat 6</b> (You may vote for ONE) <input type="radio"/> Jefferson G. Griffin <i>Republican Party</i> <input checked="" type="radio"/> Allison Riggs <i>Democratic Party</i>
			<b>NC Court of Appeals Judge Seat 12</b> (You may vote for ONE) <input type="radio"/> Tom Murry <i>Republican Party</i> <input checked="" type="radio"/> Carolyn Jennings Thompson <i>Democratic Party</i>
			Continue voting next side →

www.pamspicks.net

D	Watauga County, North Carolina	E	November 5, 2024	F	Ballot Style B0005
<b>NC Court of Appeals Judge Seat 14</b> (You may vote for ONE)		<b>NONPARTISAN ELECTIONS</b>		<b>Watauga County Board of Commissioners Structure Change</b>	
<input checked="" type="radio"/> <b>Ed Eldred</b> <i>Democratic Party</i>		<b>Watauga County Board of Education</b> (You may vote for THREE)		Shall the structure of the Watauga County Board of Commissioners be changed to: (a) Three electoral districts where commissioners living within a district are nominated and elected by qualified voters within that district and (b) Two at-large seats where qualified voters from the entire county nominate and elect commissioners to those two seats?	
<input type="radio"/> <b>Valerie Zachary</b> <i>Republican Party</i>		<input checked="" type="radio"/> <b>Adam Hege</b>			
<b>NC Court of Appeals Judge Seat 15</b> (You may vote for ONE)		<input type="radio"/> <b>Alison Carroll Idol</b>		<input checked="" type="radio"/> <b>Yes</b>	
<input type="radio"/> <b>Chris Freeman</b> <i>Republican Party</i>		<input checked="" type="radio"/> <b>Charlotte Mizelle Lloyd</b>		<input type="radio"/> <b>No</b>	
<input checked="" type="radio"/> <b>Martin E. Moore</b> <i>Democratic Party</i>		<input type="radio"/> <b>Tom Ross</b>		<b>End of Ballot</b>	
<b>NC State Senate District 47</b> (You may vote for ONE)		<input checked="" type="radio"/> <b>Marshall Ashcraft</b>			
<input type="radio"/> <b>Ralph Hise</b> <i>Republican Party</i>		<input type="radio"/> <b>Chad Cole</b>		<b>End of Ballot</b>	
<input checked="" type="radio"/> <b>Frank Patton Hughes III</b> <i>Democratic Party</i>		Write-in _____			
<b>NC House of Representatives District 93</b> (You may vote for ONE)		<input type="radio"/> _____ Write-in _____		<b>End of Ballot</b>	
<input checked="" type="radio"/> <b>Ben Massey</b> <i>Democratic Party</i>		<input type="radio"/> _____ Write-in _____			
<input type="radio"/> <b>Ray Pickett</b> <i>Republican Party</i>		<input type="radio"/> _____ Write-in _____		<b>End of Ballot</b>	
<b>NC Superior Court Judge District 35 Seat 2</b> (You may vote for ONE)		<b>Watauga County Soil and Water Conservation District Supervisor</b> (You may vote for ONE)			
<input checked="" type="radio"/> <b>Ted McEntire</b> <i>Republican Party</i>		<input checked="" type="radio"/> <b>Nate Copenbarger</b>		<b>End of Ballot</b>	
<b>NC District Court Judge District 35 Seat 2</b> (You may vote for ONE)		<input type="radio"/> _____ Write-in _____			
<input checked="" type="radio"/> <b>Rebecca Eggers-Gryder</b> <i>Republican Party</i>		<b>REFERENDA</b>		<b>End of Ballot</b>	
<b>NC District Court Judge District 35 Seat 3</b> (You may vote for ONE)		<b>Constitutional Amendment</b>			
<input checked="" type="radio"/> <b>Milton Fletcher</b> <i>Republican Party</i>		Constitutional amendment to provide that only a citizen of the United States who is 18 years of age and otherwise possessing the qualifications for voting shall be entitled to vote at any election in this State.		<b>End of Ballot</b>	
<b>NC District Court Judge District 35 Seat 4</b> (You may vote for ONE)		<input type="radio"/> <b>For</b>			
<input checked="" type="radio"/> <b>Alexandria (Allie) Leake</b> <i>Democratic Party</i>		<input checked="" type="radio"/> <b>Against</b>		<b>End of Ballot</b>	
<b>Watauga County Register of Deeds</b> (You may vote for ONE)		<input type="radio"/> <b>For</b>			
<input checked="" type="radio"/> <b>Amy J. Shook</b> <i>Republican Party</i>		<input checked="" type="radio"/> <b>Against</b>		<b>End of Ballot</b>	

S  
A  
M  
P  
L  
E  
B  
A  
L  
L  
O  
T

pawspicks.net

No pick

No pick

Watauga Board of Commissioners

If you have a Commissioner race on your ballot, one of these names will be there for you to choose:  
 Endorsed: Jon Council (Dist 3)  
 Endorsed: Charlie Wallin (Dist 4)  
 Endorsed: Sue Sweeting (Dist 5)